

Nuance Management Center

User Provisioning and Deprovisioning Configuration Guide

**On-premise
version 2023.4**

Copyright

Nuance® Management Center

This material may not include some last-minute technical changes and/or revisions to the software. Changes are periodically made to the information provided here. Future versions of this material will incorporate these changes.

Nuance Communications, Inc. has patents or pending patent applications covering the subject matter contained in this document. The furnishing of this document does not give you any license to such patents.

No part of this manual or software may be reproduced in any form or by any means, including, without limitation, electronic or mechanical, such as photocopying or recording, or by any information storage and retrieval systems, without the express written consent of Nuance Communications, Inc. Specifications are subject to change without notice.

© Nuance Communications Inc. 2023

Nuance, the Nuance logo, the Dragon logo, Dragon, and RealSpeak are registered trademarks or trademarks of Nuance Communications, Inc. in the United States or other countries. All other names and trademarks referenced herein are trademarks of Nuance Communications or their respective owners. Designations used by third-party manufacturers and sellers to distinguish their products may be claimed as trademarks by those third-parties.

Disclaimer

Nuance makes no warranty, express or implied, with respect to the quality, reliability, currentness, accuracy, or freedom from error of this document or the product or products referred to herein and specifically disclaims any implied warranties, including, without limitation, any implied warranty of merchantability, fitness for any particular purpose, or noninfringement.

Nuance disclaims all liability for any direct, indirect, incidental, consequential, special, or exemplary damages resulting from the use of the information in this document. Mention of any product not manufactured by Nuance does not constitute an endorsement by Nuance of that product.

Notice

Nuance Communications, Inc. is strongly committed to creating high quality voice and data management products that, when used in conjunction with your own company's security policies and practices, deliver an efficient and secure means of managing confidential information.

Nuance believes that data security is best maintained by limiting access to various types of information to authorized users only. Although no software product can completely guarantee against security failure, Nuance Management Center software contains configurable password features that, when used properly, provide a high degree of protection.

We strongly urge current owners of Nuance products that include optional system password features to verify that these features are enabled. You can call our support line if you need assistance in setting up passwords correctly or in verifying your existing security settings.

Published by Nuance Communications, Inc., Burlington, Massachusetts, USA

Visit Nuance Communications, Inc. on the Web at www.nuance.com.

8/16/2023

Contents

Cover_onprem	1
About this guide	iv
Guide overview	v
Audience	v
Chapter 1: Introduction	1
About user provisioning	2
About user provisioning components and workflow	2
About user provisioning audit events	3
About user deprovisioning	4
About user deprovisioning components and workflow	4
About user deprovisioning logic	4
About user deprovisioning audit events	5
About notifications	5
Chapter 2: Configuring user provisioning	6
System requirements—User provisioning	7
Preparing for user provisioning	9
Checklist—User provisioning setup	10
Installing the Nuance NCC AD Integration Service	11
Enabling user provisioning	17
Chapter 3: Configuring user deprovisioning	18
System requirements—User deprovisioning	19
Preparing user accounts for deprovisioning	22
Checklist—User deprovisioning setup	23
Modifying the Nuance.NMS.Server.exe.config file	24
Enabling JWT on your NMC server	26
Installing the Nuance NCC AD Integration Service	27
Installing Nuance NCC User Sync Service	33
Installing the service	33
Adding a non-administrator user to a group	38
Starting and testing the service	38
Installing and binding an SSL certificate	38
Advanced options	39

Additional notes	40
Enabling user deprovisioning	41
Confirming users marked for deprovisioning	43
Appendix A: Field descriptions	44
User provisioning field descriptions	45
User deprovisioning field descriptions	47
Appendix B: Troubleshooting	49
Troubleshooting your on-premise deployment	50

About this guide

Guide overview	v
Audience	v

Guide overview

Use this guide to install user provisioning and deprovisioning if you are an on-premise customer. This guide contains the following:

- System requirements for user provisioning and deprovisioning
- Installation instructions for installing the Nuance Command Center (NCC) AD Integration Service for user provisioning and deprovisioning
- Installation instructions for installing the Nuance Command Center (NCC) User Sync Service for user deprovisioning
- Configuration instructions for user provisioning and deprovisioning

Audience

This guide is intended for administrators whose responsibility is to perform the following:

- Ensure system requirements for your organization's user provisioning and deprovisioning environment are met
- Install and configure prerequisite software
- Enable and configure user provisioning and deprovisioning features

This guide assumes you have experience in hardware configuration, software installation, database management, and networking.

Chapter 1: Introduction

About user provisioning	2
About user provisioning components and workflow	2
About user provisioning audit events	3
About user deprovisioning	4
About user deprovisioning components and workflow	4
About user deprovisioning logic	4
About user deprovisioning audit events	5
About notifications	5

About user provisioning

User provisioning allows you to establish new users in Nuance Management Center automatically when your organization is using LDAP or Trusted authentication (also known as Windows Single Sign-on) and the users belong to a specific group in your LDAP directory. During user provisioning, Nuance Management Center grants a product license to the users when they log in and assigns them to the Nuance Management Center group that you specify. With user provisioning enabled, you do not need to manually create users and grant licenses in Nuance Management Center and keep them synchronized with the users in your LDAP directory.

User provisioning also includes the ability to re-provision users who were disabled manually or through the user deprovisioning process. You might want to re-provision disabled employees who returned from a leave of absence. Employees are disabled through user deprovisioning when you have selected the **Enable user deprovisioning** setting and the **Disable users who cannot be found** setting on the Organization Details page and you remove them from the LDAP group you specified or when they are disabled in your LDAP directory. Nuance Management Center automatically re-provisions these employees when you add them back to the appropriate LDAP group or when you enable them in your LDAP directory.

User provisioning differs from auto-provisioning in that it uses LDAP authentication and only creates user accounts in Nuance Management Center when they exist in the LDAP group that you specify. Auto-provisioning uses token authentication and creates user accounts in Nuance Management Center when they do not already exist.

Users must log in to their client product with their LDAP login. If no product licenses are available, Nuance Management Center still creates the user accounts, but a license error occurs when the user dictates. This error is resolved when you grant a license to the user. You must manually grant licenses after this error occurs.

You enable user provisioning in the NMC console on the **Organization Details>Provisioning** tab. You must have one of the following privileges to view and edit this tab:

- **Product Manage Dragon Medical Server**
- **Product Manage Dragon Professional**
- **Product Manage Dragon Ambient eXperience**

User provisioning is currently supported only for the following products, installation types, and authentication types:

- **Hosted**—Dragon Medical One, Dragon Professional, Dragon Ambient eXperience (LDAP only)
- **On-premise**—Dragon Medical One, Dragon Professional (LDAP or Trusted)

Note: This documentation uses the product name Dragon Medical One to refer to the following products: Dragon Medical One, Dragon Medical Direct, Dragon Case and Care.

About user provisioning components and workflow

User provisioning consists of the following components:

- **Nuance NCC AD Integration Service**—If you are a Nuance cloud-hosted customer, you install this as a Windows service on or next to your LDAP server. It accesses your user directory nightly and runs a user comparison.

- **Nuance NCC User Sync Service**—This service is hosted by Nuance. The AD Integration service calls the User Sync service to find comparison requests sent from Nuance Management Center to process. When the integration service completes a comparison against your LDAP directory, it sends the results back to the User Sync service for the NMC console to retrieve and process. The user sync service acts as a communication hub between the NMC console and the AD Integration Service.
- Nuance Management Center scheduled tasks:
 - **Event 84**—Runs every 60 minutes by default and gets a list of all organizations that have user provisioning enabled. For each organization, builds a request containing all users in the organization's group for provisioned users.
 - **Event 85**—Runs every 60 minutes starting 30 minutes after the first task runs and makes a call to the User Sync service to check for results from the AD integration service. Processes the results received by creating new users.

About user provisioning audit events

Nuance Management Center creates audit events for user provisioning events that occur, such as when a user is provisioned. Review the following in the Audit Events utility:

- **Event 7**—Object was inserted successfully (user provisioned, NTLM credentials or Token credentials created).
- **Event 11**—Object was granted to [user name] (license was assigned to a provisioned user).

About user deprovisioning

User deprovisioning simplifies your user management process by providing automatic user synchronization between Nuance Management Center and your organization's LDAP user directory. With user deprovisioning enabled, you do not need to review the status of users in your user directory and manually make adjustments in Nuance Management Center to keep the users synchronized. User deprovisioning performs the following functions for you automatically:

- Queries your LDAP user directory nightly and disables or deletes users in Nuance Management Center based on their status in your active directory.

Nuance Management Center disables or deletes only users who do not have an **NMC Administrator** license.

- Provides the option for you to first review users to be deprovisioned before Nuance Management Center performs the action, allowing you to cancel the deprovisioning.
- Revokes the product licenses from disabled or deleted users, allowing them to be re-used.

You enable deprovisioning in the NMC console on the **Organization Details>Deprovisioning** tab. You must have the appropriate grants to view and access this tab.

About user deprovisioning components and workflow

User deprovisioning consists of the following components:

- **Nuance NCC AD Integration Service**—Installed as a Windows service on or next to your LDAP server. It accesses your user directory nightly and runs a user comparison.
- **Nuance NCC User Sync Service**—This service is hosted by Nuance. The AD Integration service calls the User Sync service to find comparison requests sent from Nuance Management Center to process. When the integration service completes a comparison against your LDAP directory, it sends the results back to the User Sync service for the NMC console to retrieve and process. The user sync service acts as a communication hub between the NMC console and the AD Integration Service.
- **Nuance Management Center scheduled tasks**—Several scheduled tasks perform the following on a nightly basis:
 - Initiate deprovisioning by sending a request for a user comparison to the User Sync service to be picked up by the AD integration service.
 - Call to receive the result of the comparison performed by the AD integration service.
 - Mark users to be disabled or deleted based on the comparison results.

Note: Users are disabled and deleted when their appropriate scheduled tasks run. There are separate scheduled tasks for disabling and delete users; as a result, users marked for delete may be deleted at a later time than the users who are disabled.

- Disable or delete users in Nuance Management Center when the administrator has reviewed the list of marked users and provided confirmation (if **Require confirmation** option is enabled) and revoke the appropriate product licenses.

Note: When your administrator provides confirmation, users are disabled and deleted the next time the User Sync service runs.

About user deprovisioning logic

The following actions occur during the user deprovisioning process:

- When users exist in Nuance Management Center but do not exist in your user directory, the users are disabled or deleted in Nuance Management Center based on whether you selected the **Disable users who cannot be found** setting.

For more information on this setting, see [“User deprovisioning field descriptions” on page 47](#).

- When users exist in Nuance Management Center and also exist in your user directory, but do not belong to the group you selected in the **Group Distinguished Name** field, the users are disabled and their product licenses are revoked.

For more information on the **Group Distinguished Name** field, see [“User deprovisioning field descriptions” on page 47](#).

- When users exist in Nuance Management Center and exist in your user directory in the group you selected but are disabled, the users are disabled in Nuance Management Center and their product licenses are revoked.

Note: Nuance Management Center does not disable or delete users with the **NMC Administrator** license.

About user deprovisioning audit events

Nuance Management Center creates audit events for deprovisioning actions that occur, such as when a user is deleted. Review the following in the Audit Events utility:

- **Events 88 through 93**—Deprovisioning events
- **Event 12**—Events for revoked licenses

About notifications

Nuance Management Center sends the following deprovisioning notifications to the user that you specify:

- Success notification indicating the number of users flagged for deprovisioning.
- Error message with the request transaction ID for troubleshooting.

You specify this user's email address on the **Organization Details page>Deprovisioning tab**. For more information, see [“User deprovisioning field descriptions” on page 47](#).

Chapter 2: Configuring user provisioning

System requirements—User provisioning	7
Preparing for user provisioning	9
Checklist—User provisioning setup	10
Installing the Nuance NCC AD Integration Service	11
Enabling user provisioning	17

System requirements—User provisioning

Ensure that your environment meets the following requirements before configuring user provisioning.

Component	Requirement
Software	<p>You must install and configure the Nuance NCC AD Integration Service on or next to your LDAP server. This service requires access to your user directory.</p> <p>You obtain the installation file from your Nuance Field Services representative.</p>
LDAP server	<ul style="list-style-type: none"> • Processor: Dual-Core 2GHz CPU • Minimum RAM: 4 GB • Storage: 4 GB free space for rolling logs • Operating System: Windows Server 2012 and later 64-bit • Active Directory supporting the LDAP protocol
Auth0	<p>Your Nuance Field Services representative creates a machine-to-machine application (or client) for you on the Auth0 server. The application allows the Nuance NCC AD Integration Service to communicate with the User Sync microservice.</p>
Nuance Management Center privileges	<p>One of the following privileges to access the Provisioning tab:</p> <ul style="list-style-type: none"> • Product Manage Dragon Medical Server • Product Manage Dragon Professional • Product Manage Dragon Ambient eXperience
Email addresses	<p>If you choose to enable both user provisioning and deprovisioning, an email address is required for all users in your user directory.</p> <p>To ensure an email address is provided for all users, you can optionally enable the Email address required for organization users setting on the Organization Details page in the NMC console. For more information on this setting, see the Nuance Management Center Help.</p>

Component	Requirement
	For more information, see “Preparing for user provisioning” on page 9.

Preparing for user provisioning

The user provisioning process creates new users in Nuance Management Center and does the following:

- Imports users' email addresses as defined in your user directory.
- Imports users' First Name and Last Name as defined in your user directory.
- Sets each user's login in Nuance Management Center to the login defined in your user directory.
- Sets the NTLM credentials, which are required to log in to Dragon Medical One with active directory.

The user provisioning process populates the NTLM credentials using the Active Directory **UserDomain** and **UserName**. The UserDomain must match the Domain defined in Nuance Management Center on the **Organization Details>Domains** tab.

For more information, see the "Managing Active Directory domains" topic in the NMC Help.

To ensure your users are provisioned without issue, Nuance recommends you do the following before enabling user provisioning:

- Be consistent with your user logins and email addresses.
For example, if a user's login is "john.smith", make the user's email address "john.-smith@domain.com". Do the same with other credentials.
- Consider enabling the **Email address required for organization users** setting on the Organization Details page.

This ensures users' email addresses are not blank upon user creation in Nuance Management Center when no email address exists in your user directory.

Note: If you choose to implement both user provisioning and deprovisioning, a valid email address is required for all users in your user directory.

For additional recommendations for user deprovisioning, see ["Preparing user accounts for deprovisioning" on page 22](#).

Checklist—User provisioning setup

Both Nuance cloud-hosted customers and on-premise customers must do the following to configure user provisioning.

<input type="checkbox"/>	Task	Reference
<input type="checkbox"/>	Locate your organization's Nuance Healthcare account GUID.	You can find this in the NMC console on the Organization Details page>Products tab>General tab .
<input type="checkbox"/>	Ensure your environment meets all system requirements.	“System requirements—User provisioning” on page 7
<input type="checkbox"/>	Obtain the Nuance-NCC-AD-IntegrationService.exe file from Nuance Field Services.	Contact your Nuance Field Services representative.
<input type="checkbox"/>	Install Nuance-NCC-AD-IntegrationService.exe.	“Installing the Nuance NCC AD Integration Service” on page 27
<input type="checkbox"/>	Enable user provisioning in the NMC console.	“Enabling user provisioning” on page 17

Installing the Nuance NCC AD Integration Service

You must install the **Nuance NCC AD Integration Service** on or next to your LDAP server to allow it to access your user directory. This service is required for both user provisioning and user deprovisioning. Both cloud-hosted and on-premise customers must install this service.

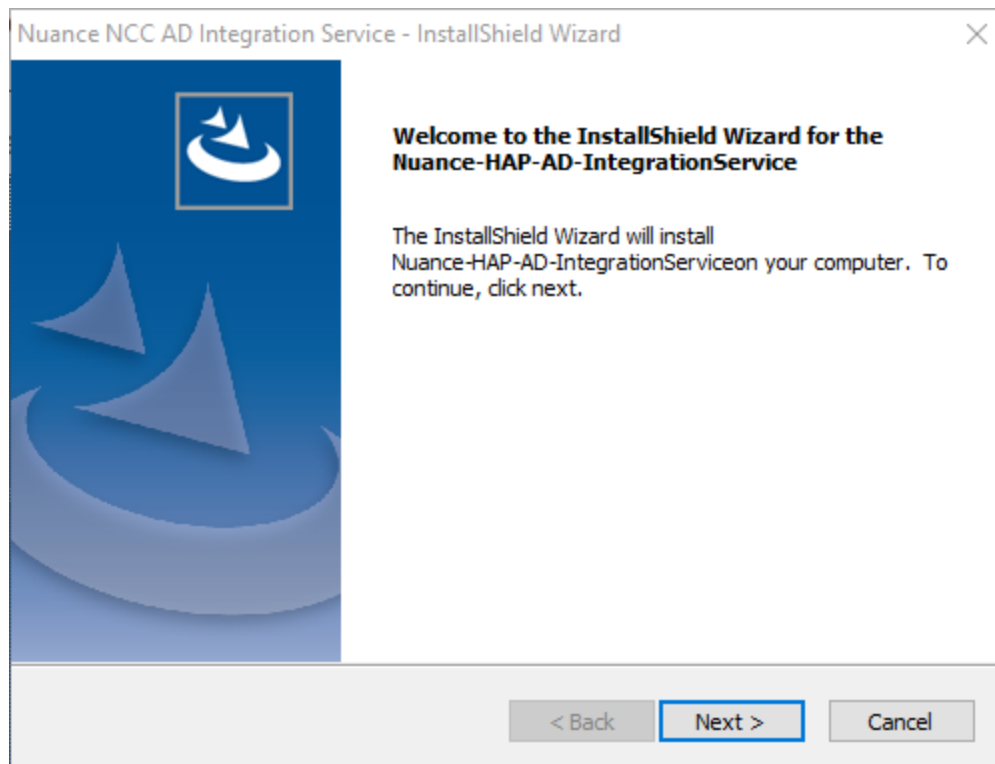
Nuance provides you with the installation file. You do not need to provide a Client ID or Client Secret during the installation.

The installation process assumes you are installing user deprovisioning by default.

Do the following to install the integration service:

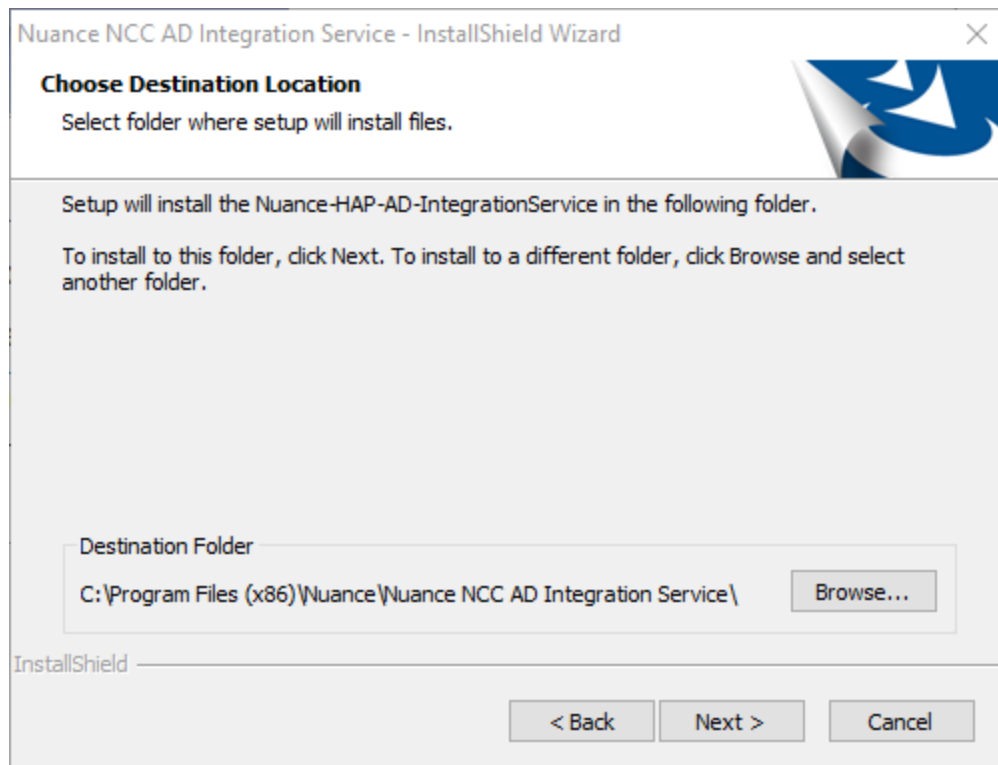
1. Double-click the `Nuance-NCC-AD-IntegrationService.exe` file to launch the installation.

The Welcome screen appears.

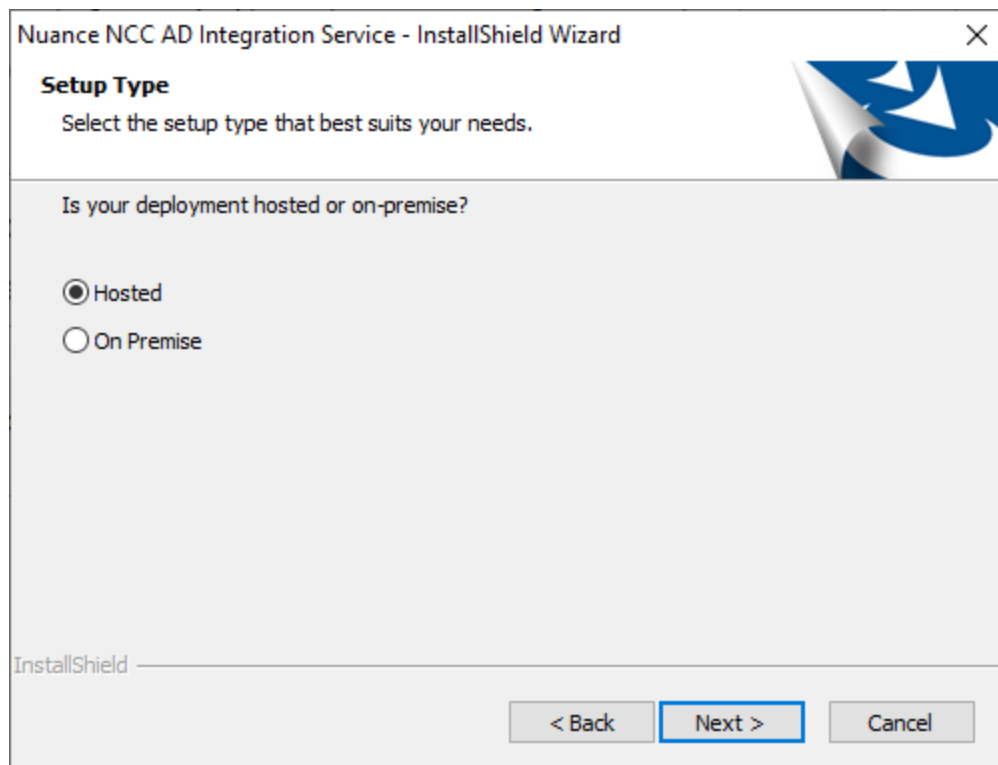


2. Click **Next**.

The Choose Destination screen appears.



3. Click **Browse** to select a different installation folder, or click **Next** to accept the default. The Setup Type screen appears.



4. Select the following:
 - **On Premise**—Your Nuance Management Center installation is on-premise.

5. Click **Next**.

The Organization Config screen appears.

The screenshot shows a window titled "Nuance-HAP-AD-IntegrationService - InstallShield Wizard" with a close button (X) in the top right corner. Below the title bar is a header "Organization Config". The main area contains six input fields, each with a label to its left: "Provisioning Polling Interval", "Deprovisioning Polling Interval", "Nuance Organization Guid:", "Api Audience:", "Authentication Authority:", and "User Sync Server:". The "Provisioning Polling Interval" field is currently active, indicated by a blue border and a vertical cursor. At the bottom of the window, there are three buttons: "< Back", "Next >" (which is highlighted with a blue border), and "Cancel". The "InstallShield" logo is visible in the bottom left corner of the window.

6. Specify the following:

- **Provisioning or Deprovisioning Polling Interval**—The period of time the Nuance NCC AD Integration Service will wait in between calls to the User Sync service for comparison requests to process. For example, if you specify 30, the integration service will process any available comparisons every 30 seconds. Specify a positive integer..

This process does the following:

- **Event 80**—Runs at 01:00 UTC and issues the request for comparison.
- **Event 81**—Runs at 03:00 UTC and populates the database with the comparison data.
- **Event 82**—Finishes the process at 04:00 UTC executing any changes, assuming changes have been confirmed. If the polling interval is set to check once per day and the time frames above are missed, the request data is held until the next scheduled event.
- **Event 84**—Runs every 60 minutes by default and gets a list of all organizations that have user provisioning enabled. For each organization, builds a request containing all users in the organization's group for provisioned users.
- **Event 85**—Runs every 60 minutes starting 30 minutes after the first task runs and makes a call to the User Sync service to check for results from the AD integration service. Processes the results received by creating new users.
- **Nuance Organization Guid**—The Nuance Healthcare Account GUID assigned to your organization when it was created. This is located in the NMC console in **Organization**

Details>Products>General.**Example:** 3d53b893-3b19-408d-b9aa-c13891ea693b

- **Api Audience**—Name of the API for user synchronization. This value limits the scope of access to the user synchronization API.
 - **On-premise customers**—Specify **http://nms.nuance.com**, regardless of your NMC server name.

In on-premise deployments, Nuance Management Center is the authentication authority. **Nuance NCC AD Integration Service** gets a token from Nuance Management Center and presents that token to **Nuance NCC User Sync Service** when making calls. **Nuance NCC User Sync Service** verifies this token. The API audience (**http://nms.nuance.com**) is used in the token verification process.

- **Authentication Authority—Authentication Authority**—Name of the Auth0 server.
 - **On-premise customers**—Specify the URL for your NMC server. For example, **https://nms.localserver.com**.
- **User Sync Server**—Name of the server for user synchronization.
 - **On-premise customers**—Specify the URL for your User Sync server. For example, **https://usersync.localserver.com**.

7. Click **Next**.

The Secrets screen appears.

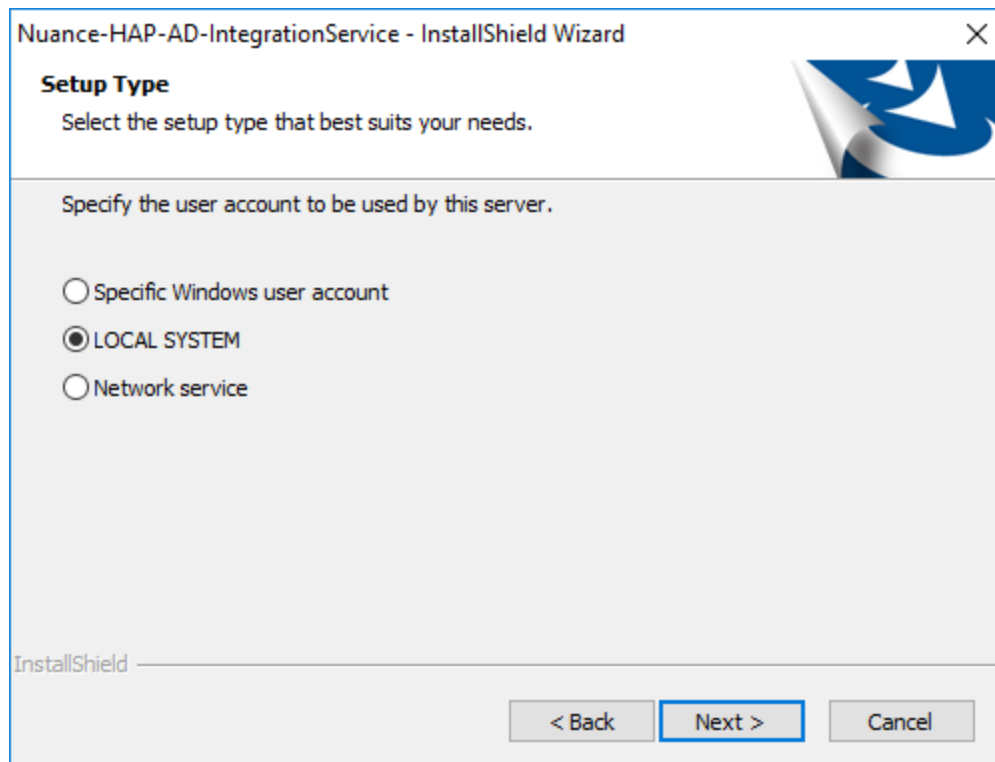
8. Specify the following:

- **Client Id**
 - **On-premise customers**—Specify **on-prem**.

- **Client Secret**
 - **On-premise customers**—Specify **on-prem**.
- **Ldap Bind Dn**—LDAP account the Nuance NCC AD Integration Service will bind to the directory as. Be sure this account has read-only access to the directory. For example, "CN=Joe Smith,DC=hospital123,DC=com".
- **Ldap Bind Password**—Password for the LDAP Bind Dn account.

9. Click **Next**.

The Setup Type screen appears.



10. Select the user account the AD Integration service runs under. The default value is **LOCAL SYSTEM**.

Note: If you are an on-premise customer and you select **Specific Windows user account**, the user must meet the following requirements:

- Has a corresponding user created in your organization in Nuance Management Center.
- The Nuance Management Center login matches the domain login of this user's Windows account.

11. Click **Next**.

If you selected **Specific Windows user account**, the Logon Information screen appears.

Nuance-HAP-AD-IntegrationService - InstallShield Wizard

Logon Information
Specify a user account and password.

Specify the user account to be used by this server.

User accounts must be in the format DOMAIN\Username.

User Name:

Password:

Select the button below to specify information about a new user that will be created during the installation.

InstallShield

12. Specify the User Name and Password.
13. Click **Next**.

The Ready to Install screen appears.

Nuance-HAP-AD-IntegrationService - InstallShield Wizard

Ready to Install the Program
The wizard is ready to begin installation.

Click Install to begin the installation.

If you want to review or change any of your installation settings, click Back. Click Cancel to exit the wizard.

InstallShield

14. Click **Install** to begin the installation.

Enabling user provisioning

You enable user provisioning on the **Organization Details>Provisioning** tab. You must have the appropriate privileges to view, access, and change settings on this tab.

For more information, see [“System requirements—User provisioning” on page 7](#).

Note: User provisioning is currently supported only for Dragon Medical One (Nuance cloud-hosted and on-premise), Dragon Professional (Nuance cloud-hosted and on-premise), and Dragon Ambient eXperience (Nuance cloud-hosted) customers.

To enable user provisioning:

1. View an organization.

The Manage Organization page appears.

2. View organization details.

The Organization Details page appears.

3. Click the Provisioning tab.

You must have the **Product Manage Dragon Medical Server** privilege, the **Product Manage Dragon Professional** privilege, or the **Product Manage Dragon Ambient eXperience** privilege to view and access this tab.

4. Select the appropriate product tab.

5. Select **Enable user provisioning for this product**.

For field information, see [“User provisioning field descriptions” on page 45](#).

6. Select a group from the **Add users to group** drop-down list.

Nuance Management Center creates the new users in this group.

Note: If you select **<Generated>**, user provisioning creates a new group called **Dragon Medical** and places all provisioned users in this group.


7. Specify your LDAP server information.

For field information, see [“User provisioning field descriptions” on page 45](#).

8. Do one of the following:

- If you have an Enterprise license, click **Save**.
- If you have Account licenses and want to auto-assign available licenses upon login, do the following:

1. Select **Restrict automatic license assignment...**

2. Select the license type from the Automatic license assignment disabled list, click the Right arrow button (), and then click **Save**.

Chapter 3: Configuring user deprovisioning

System requirements—User deprovisioning	19
Preparing user accounts for deprovisioning	22
Checklist—User deprovisioning setup	23
Modifying the Nuance.NMS.Server.exe.config file	24
Enabling JWT on your NMC server	26
Installing the Nuance NCC AD Integration Service	27
Installing Nuance NCC User Sync Service	33
Installing the service	33
Adding a non-administrator user to a group	38
Starting and testing the service	38
Installing and binding an SSL certificate	38
Advanced options	39
Additional notes	40
Enabling user deprovisioning	41
Confirming users marked for deprovisioning	43

System requirements—User deprovisioning

If you are an on-premise customer, ensure that your environment meets the following requirements before configuring user deprovisioning.

Note: These requirements assume you have an existing Nuance Management Center environment and database installed, configured, and accessible.

Component	Requirement
<p>Software</p>	<p>You must install and configure the following:</p> <ul style="list-style-type: none"> • Nuance NCC AD Integration Service—You must install and configure this service on or next to your LDAP server. This service requires access to your user directory. You obtain the installation file from your Nuance Field Services representative. • Nuance NCC User Sync Service—You must install and configure this service on a server accessible by both Nuance NCC AD Integration Service and Nuance Management Center. This service requires access to the Nuance Management Center database. You obtain the installation file from your Nuance Field Services representative. <ul style="list-style-type: none"> • If TLS 1.2 is enabled in your environment, the Microsoft OLE DB Driver for SQL Server is required. The NCC User Sync Service installation prompts you to install it if it is not already installed.
<p>LDAP server</p>	<ul style="list-style-type: none"> • Processor: Dual-Core 2GHz CPU • Minimum RAM: 4 GB • Storage: 4 GB free space for rolling logs • Operating System: Windows Server 2012 and later 64-bit • LDAP directory
<p>Security</p>	<ul style="list-style-type: none"> • SSL certificate <p>Nuance recommends that you host the Nuance NCC User Sync Service APIs on SSL/HTTPS. To do so, you'll need an</p>

Component	Requirement
	<p>SSL certificate signed by a Certificate Authority (CA).</p> <p>Nuance Management Center does not support self-signed certificates.</p> <p>Certificates should include the following:</p> <ul style="list-style-type: none"> • Friendly Name (common name) • DNS Name (FQDN) • Exact server name (sometimes located in Alternative Names) <p>Note: Use this exact server name for user deprovisioning configuration.</p> <ul style="list-style-type: none"> • FQDN of the host name <p>This is required for proper name resolution with DNS.</p>
<p>Nuance Management Center Grants/Privileges</p>	<p>The following grants are required for user deprovisioning:</p> <ul style="list-style-type: none"> • Manage User Deprovisioning—Required to view and access the Deprovisioning tab. • Modify Organization—Required to modify the settings on the Deprovisioning tab. • Delete Users in All Groups—Required to select and deselect users marked for disable and delete.
<p>Database and Database users</p>	<p>Database</p> <p>The installation creates tables and stored procedures. Nuance recommends that you install the User Sync database on the same server where you have your Nuance Management Center database installed.</p> <ul style="list-style-type: none"> • Supported version—SQL Server 2016 only • Initial size—16 MB • Disk space—Nuance recommends allocating 10 GB for the User Sync database. • Backups—Optionally enable backups for this database according to your organization's policies for data retention.

Component	Requirement
	<p>For additional requirements, see the SQL Server database requirements for Nuance Management Center in the <i>Nuance Management Center Installation and Configuration Guide</i>.</p> <p>Database users</p> <p>You must have available two database users:</p> <ul style="list-style-type: none"> • User who can create tables, indexes, procedures, and so on. The Nuance NCC User Sync Service installation runs under this user. • User who can execute procedures to which the user is granted. This user is created during setup by the user in the user in the previous bullet point. The Nuance NCC User Sync Service logs in to your database under this user and runs read and write procedures. <p>Both users must use SQL native authentication. Windows authentication is currently not supported.</p>
Email addresses	<p>To be evaluated for deprovisioning, your user accounts must have a valid email address in Nuance Management Center. The deprovisioning process uses email addresses to match user accounts in Nuance Management Center with the users in your LDAP directory.</p> <p>To ensure an email address is provided for all users, you can optionally enable the Email address required for organization users setting on the Organization Details page in the NMC console. For more information on this setting, see the Nuance Management Center Help.</p>
Other	Ensure you use the same hostname throughout the entire installation.

Preparing user accounts for deprovisioning

To implement user deprovisioning, a valid email address is required for all users in your user directory. If you have existing users in Nuance Management Center, you can update their email addresses if necessary using the Import Users feature to overwrite their existing email addresses.

For more information, see the "Importing new or modifying existing users" section of the "Working with user accounts" topic in the NMC Help.

For additional recommendations for user provisioning, see ["Preparing for user provisioning" on page 9](#).

Checklist—User deprovisioning setup

<input type="checkbox"/>	Task	Reference
<input type="checkbox"/>	Locate your organization's Nuance Healthcare account GUID.	You can find this in the NMC console on the Organization Details page>Products tab>General tab .
<input type="checkbox"/>	Ensure your environment meets all system requirements.	“System requirements—User deprovisioning” on page 19
<input type="checkbox"/>	Modify the <code>Nuance.NMS.Server.exe.config</code> file to enable user deprovisioning.	“Modifying the Nuance.NMS.Server.exe.config file” on page 24
<input type="checkbox"/>	Enable JWT on your NMC server.	“Enabling JWT on your NMC server” on page 26.
<input type="checkbox"/>	Obtain the <code>Nuance-NCC-AD-IntegrationService.exe</code> file from Nuance Field Services.	Contact your Nuance Field Services representative.
<input type="checkbox"/>	Install <code>Nuance-NCC-AD-IntegrationService.exe</code> .	“Installing the Nuance NCC AD Integration Service” on page 27
<input type="checkbox"/>	Obtain the <code>Nuance-NCC-User-Sync-Service.exe</code> file from Nuance.	Contact your Nuance Field Services representative. See the additional requirement in “System requirements—User deprovisioning” on page 19
<input type="checkbox"/>	Install <code>Nuance-NCC-User-Sync-Service.exe</code> .	“Installing Nuance NCC User Sync Service” on page 33
<input type="checkbox"/>	Optionally install and bind an SSL certificate.	“Installing and binding an SSL certificate” on page 38
<input type="checkbox"/>	Start and test the User Sync service.	“Starting and testing the service” on page 38
<input type="checkbox"/>	Review optional advanced options.	“Advanced options” on page 39
<input type="checkbox"/>	Enable user deprovisioning in the NMC console.	“Enabling user deprovisioning” on page 41

Modifying the Nuance.NMS.Server.exe.config file

If you are an on-premise customer configuring user deprovisioning, you must edit the Nuance.NMS.Server.exe.config file to enable user deprovisioning.

Do the following:

1. Open the Nuance.NMS.Server.exe.config file.
2. Add the line highlighted below to the NotificationSystemConfig section if it does not already exist:

```

    <!--<section name="HealthQueueMSConfig"
type="NMS.Platform.Configuration.MSHealthQueueConfig,
NMS.Platform.Configuration" />-->
    <!--<section name="AuditMSConfig"
type="NMS.Platform.Configuration.MSConfig,
NMS.Platform.Configuration" />-->
    <!--<section name="ClientVersionMSConfig"
type="NMS.Platform.Configuration.MSConfig,
NMS.Platform.Configuration" />-->
    <!--<section name="SpeechUsageMSConfig"
type="NMS.Platform.Configuration.MSConfig,
NMS.Platform.Configuration" />-->
    <!--<section name="LicenseUsageMSConfig"
type="NMS.Platform.Configuration.MSConfig,
NMS.Platform.Configuration" />-->
    <!--<section name="NotificationSystemConfig"
type="NMS.Platform.Configuration.MSConfig,
NMS.Platform.Configuration" />-->
    <section name="UserSyncMSConfig"
type="NMS.Platform.Configuration.MSConfig,
NMS.Platform.Configuration" />

```

3. If the line already exists, uncomment the line by removing the beginning tag <!-- and ending tag -->.
4. Add the line highlighted below to the appSettings section if it does not already exist:

```

<appSettings>
  <add key="ApplicationServicesFolder" value="AppServices" />
  <add key="ConnectorFolder" value="Connectors" />
  .
  .
  .
  <!--<add key="Region" value="[AZURE_REGION_NEEDED]" />-->
  <!--<add key="KeyVaultURI" value="[KEY_VAULT_URL_NEEDED]" />-->
  <!--<add key="NmsKeyVaultAccessMode" value="[value]" />-->
  <!--<add key="KeyVaultRefreshIntervalSeconds" value="6000" />-->
  <!--<add key="NuanceMCContext" value="NuanceMCContext" />-->
</appSettings>
<UserSyncMSConfig ServiceName="UserSync" IsEnabled="true" MicroserviceApiURL="se
KeyVaultQConfigSecretName="UserSyncSecrets" UsedForOnPrem="true" />

```

5. If the line already exists, uncomment the line by removing the beginning tag `<!--` and ending tag `-->`.

6. Change the `MicroserviceApiURL` value to the URL of the machine where you are installing the **Nuance NCC User Sync Service**.

```
<UserSyncMSConfig ServiceName="UserSync" IsEnabled="true"  
MicroserviceApiURL="http://servername.server.com"  
KeyVaultQConfigSecretName="UserSyncSecrets" UsedForOnPrem="true"/>
```

7. Ensure the `UsedForOnPrem` value is set to **true**.

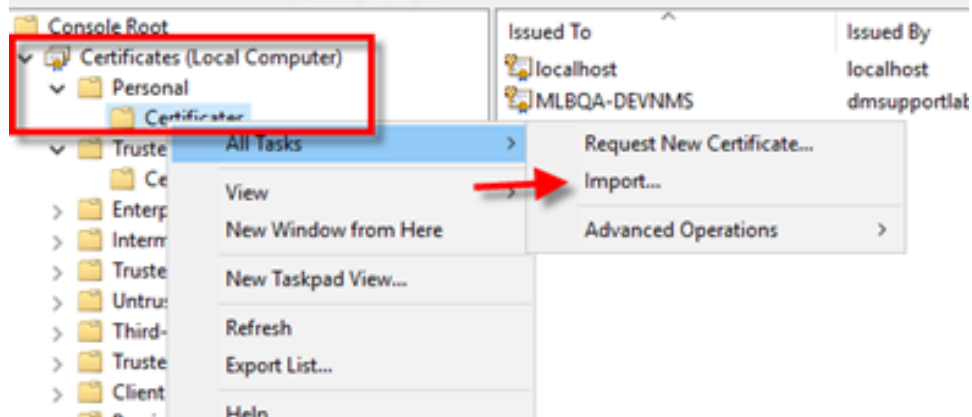
This setting is **false** by default.

```
<UserSyncMSConfig ServiceName="UserSync" IsEnabled="true"  
MicroserviceApiURL="servername.server.com"  
KeyVaultQConfigSecretName="UserSyncSecrets" UsedForOnPrem="true" />
```

8. Save and close the file.
9. Restart the NMS Platform Service.

Enabling JWT on your NMC server

1. Obtain a certificate from a Certificate Authority.
2. Import the certificate into the Local Computer Personal folder using MMC . exe.



3. Obtain the certificate thumbprint.
 1. Open Windows PowerShell.
 2. Type `dir cert:\currentuser\my`.
 3. Highlight and copy the thumbprint for your certificate.
4. Open the `Nuance.NMS.Server.exe.config` file as Administrator in any text editor.
5. Add the following line:


```
<!--<add key="JwtCertificateThumbprint" value="thumbprint" />-->
```

Where indicated below in the `<appSettings>` section and uncomment the line by removing the beginning tag (`<!--`) and ending tag (`-->`):

```
Nuance.NMS.Server.exe.config
16 <add key="ApplicationServicesFolder" value="AppServices" />
17 <add key="ConnectorFolder" value="Connectors" />
18 <add key="AuthenticationProviderFolder" value="AuthenticationProviders" />
19 <add key="NMSServerHostName" value="localhost" />
20 <add key="UseSSL" value="true" />
21 <add key="FileStorePath" value="" />
22 <add key="ForceNTLMDomain" value="" />
23 <!--<add key="JwtCertificateThumbprint" value="E1BAB8FAA75FA3DBFDSFDD471773F99854F516F5" />-->
24 <add key="OpenIdConnectMetadataUrl" value="https://nuancehdpdev.auth0.com/.well-known/openid-configuration" />
25 <add key="ClientSettingsProvider.ServiceUri" value="" />
```

6. In the same entry, replace the `JwtCertificateThumbprint` value with your certificate's thumbprint.
7. Save the file.
8. Restart the NMS Platform Service.
9. Log in to Nuance Management Center to verify that JWT is enabled.

Installing the Nuance NCC AD Integration Service

You must install the **Nuance NCC AD Integration Service** on or next to your LDAP server to allow it to access your user directory. This service is required for both user provisioning and user deprovisioning. Both cloud-hosted and on-premise customers must install this service.

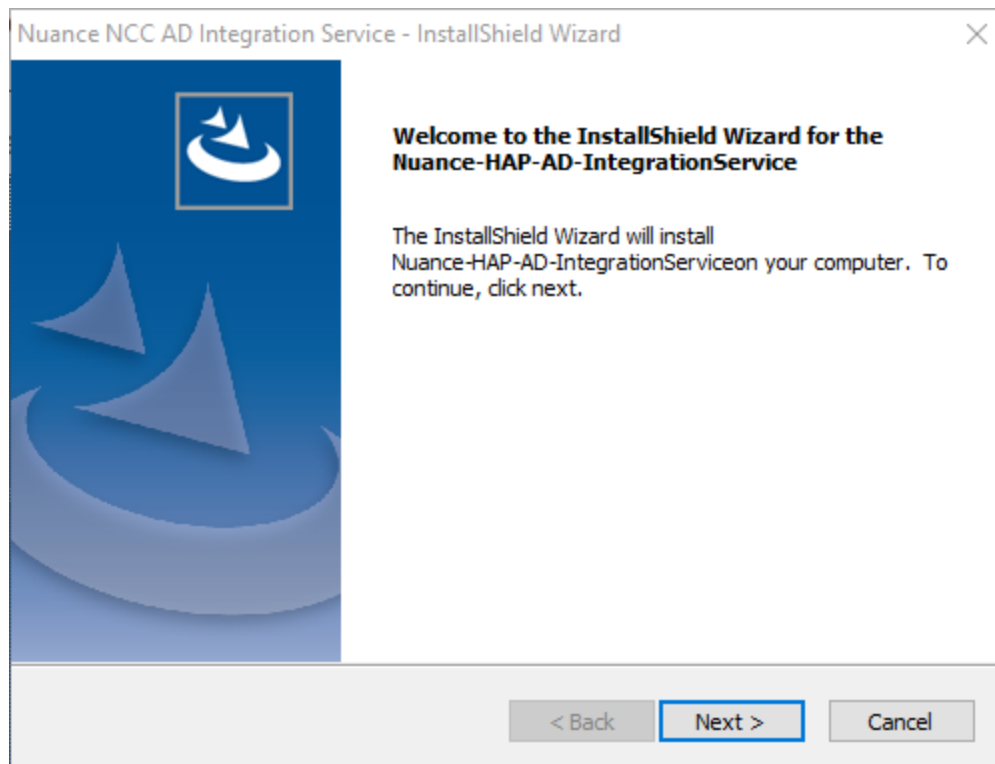
Nuance provides you with the installation file. You do not need to provide a Client ID or Client Secret during the installation.

The installation process assumes you are installing user deprovisioning by default.

Do the following to install the integration service:

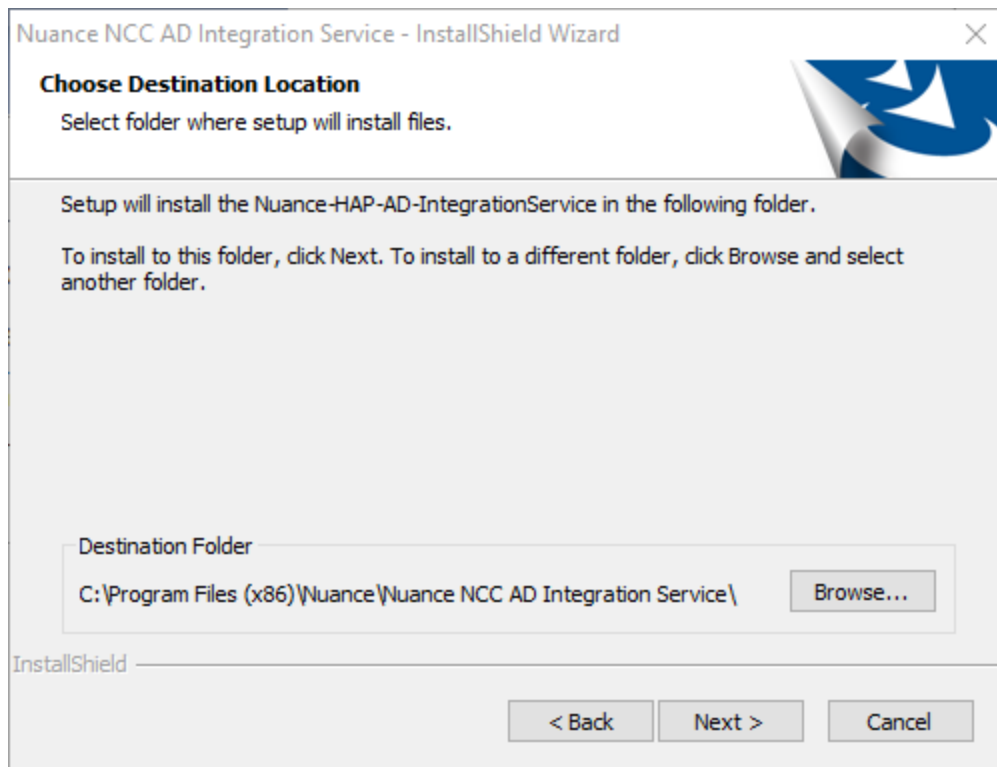
1. Double-click the `Nuance-NCC-AD-IntegrationService.exe` file to launch the installation.

The Welcome screen appears.

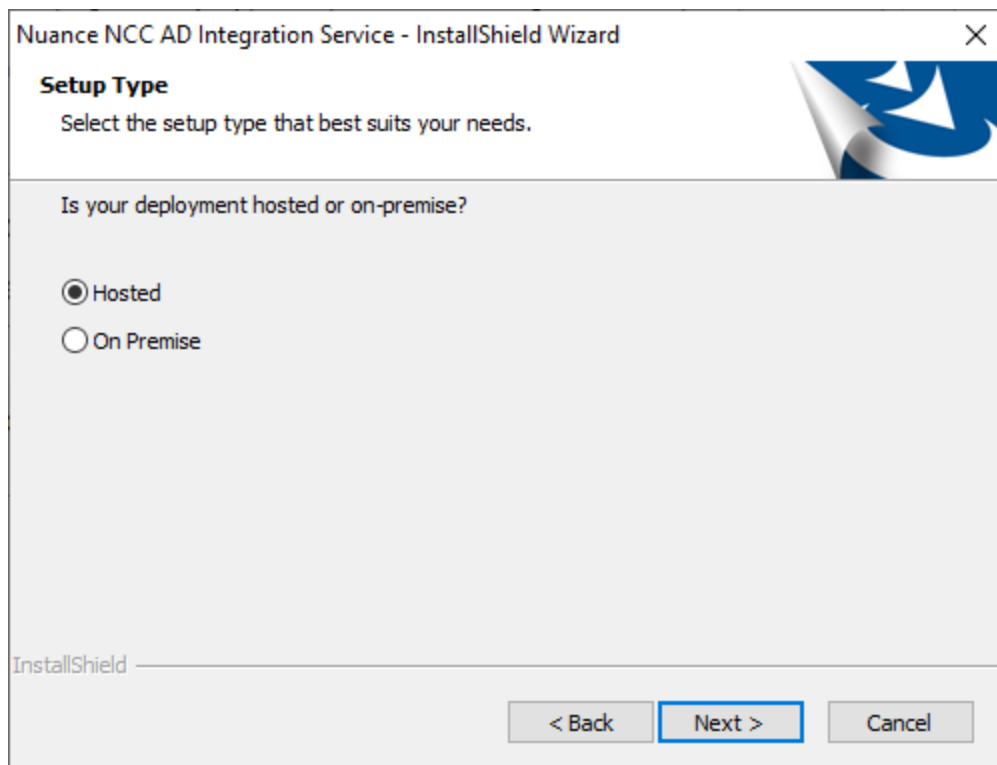


2. Click **Next**.

The Choose Destination screen appears.



3. Click **Browse** to select a different installation folder, or click **Next** to accept the default. The Setup Type screen appears.



4. Select the following:
 - **On Premise**—Your Nuance Management Center installation is on-premise.

5. Click **Next**.

The Organization Config screen appears.

6. Specify the following:

- **Provisioning or Deprovisioning Polling Interval**—The period of time the Nuance NCC AD Integration Service will wait in between calls to the User Sync service for comparison requests to process. For example, if you specify 30, the integration service will process any available comparisons every 30 seconds. Specify a positive integer..

This process does the following:

- **Event 80**—Runs at 01:00 UTC and issues the request for comparison.
- **Event 81**—Runs at 03:00 UTC and populates the database with the comparison data.
- **Event 82**—Finishes the process at 04:00 UTC executing any changes, assuming changes have been confirmed. If the polling interval is set to check once per day and the time frames above are missed, the request data is held until the next scheduled event.
- **Event 84**—Runs every 60 minutes by default and gets a list of all organizations that have user provisioning enabled. For each organization, builds a request containing all users in the organization's group for provisioned users.
- **Event 85**—Runs every 60 minutes starting 30 minutes after the first task runs and makes a call to the User Sync service to check for results from the AD integration service. Processes the results received by creating new users.
- **Nuance Organization Guid**—The Nuance Healthcare Account GUID assigned to your organization when it was created. This is located in the NMC console in **Organization**

Details>Products>General.**Example:** 3d53b893-3b19-408d-b9aa-c13891ea693b

- **Api Audience**—Name of the API for user synchronization. This value limits the scope of access to the user synchronization API.
 - **On-premise customers**—Specify **http://nms.nuance.com**, regardless of your NMC server name.

In on-premise deployments, Nuance Management Center is the authentication authority. **Nuance NCC AD Integration Service** gets a token from Nuance Management Center and presents that token to **Nuance NCC User Sync Service** when making calls. **Nuance NCC User Sync Service** verifies this token. The API audience (**http://nms.nuance.com**) is used in the token verification process.

- **Authentication Authority—Authentication Authority**—Name of the Auth0 server.
 - **On-premise customers**—Specify the URL for your NMC server. For example, **https://nms.localserver.com**.
- **User Sync Server**—Name of the server for user synchronization.
 - **On-premise customers**—Specify the URL for your User Sync server. For example, **https://usersync.localserver.com**.

7. Click **Next**.

The Secrets screen appears.

The screenshot shows a wizard window titled "Nuance-HAP-AD-IntegrationService - InstallShield Wizard". The main content area is labeled "Secrets" and contains four input fields for configuration: "Client Id:", "Client Secret:", "Ldap Bind Dn:", and "Ldap Bind Password:". At the bottom of the window, there are three buttons: "< Back", "Next >", and "Cancel". The "Next >" button is highlighted with a blue border, indicating it is the next step in the process.

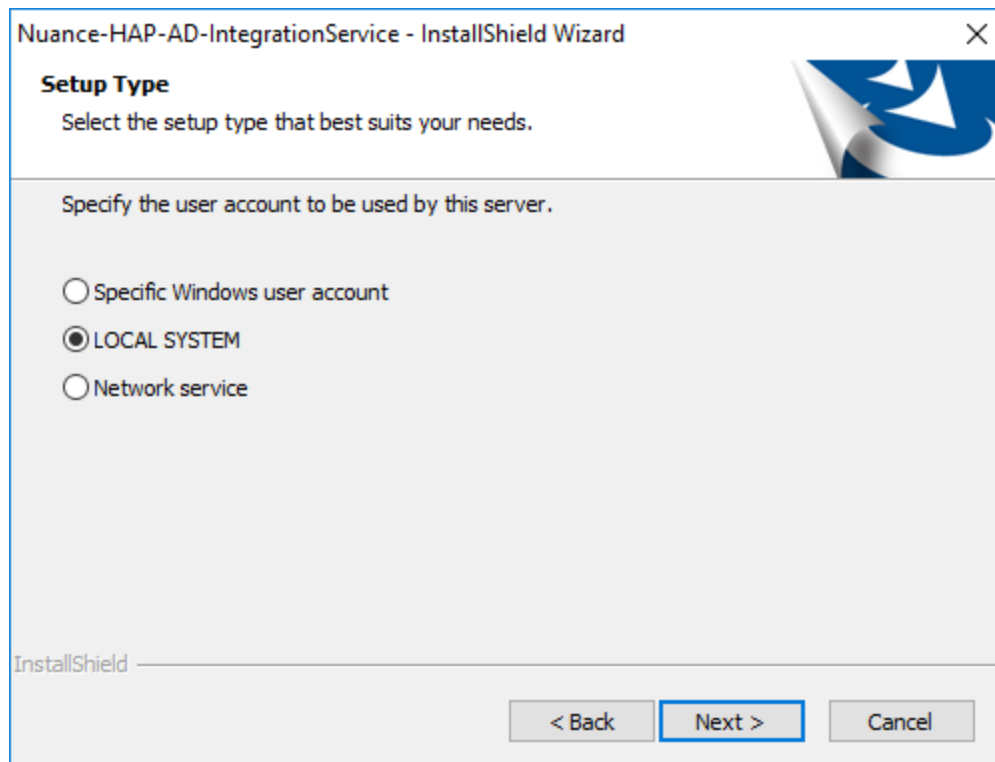
8. Specify the following:

- **Client Id**
 - **On-premise customers**—Specify **on-prem**.

- **Client Secret**
 - **On-premise customers**—Specify **on-prem**.
- **Ldap Bind Dn**—LDAP account the Nuance NCC AD Integration Service will bind to the directory as. Be sure this account has read-only access to the directory. For example, "CN=Joe Smith,DC=hospital123,DC=com".
- **Ldap Bind Password**—Password for the LDAP Bind Dn account.

9. Click **Next**.

The Setup Type screen appears.



10. Select the user account the AD Integration service runs under. The default value is **LOCAL SYSTEM**.

Note: If you are an on-premise customer and you select **Specific Windows user account**, the user must meet the following requirements:

- Has a corresponding user created in your organization in Nuance Management Center.
- The Nuance Management Center login matches the domain login of this user's Windows account.

11. Click **Next**.

If you selected **Specific Windows user account**, the Logon Information screen appears.

Nuance-HAP-AD-IntegrationService - InstallShield Wizard

Logon Information
Specify a user account and password.

Specify the user account to be used by this server.

User accounts must be in the format DOMAIN\Username.

User Name:

Password:

Select the button below to specify information about a new user that will be created during the installation.

InstallShield

12. Specify the User Name and Password.
13. Click **Next**.

The Ready to Install screen appears.

Nuance-HAP-AD-IntegrationService - InstallShield Wizard

Ready to Install the Program
The wizard is ready to begin installation.

Click Install to begin the installation.

If you want to review or change any of your installation settings, click Back. Click Cancel to exit the wizard.

InstallShield

14. Click **Install** to begin the installation.

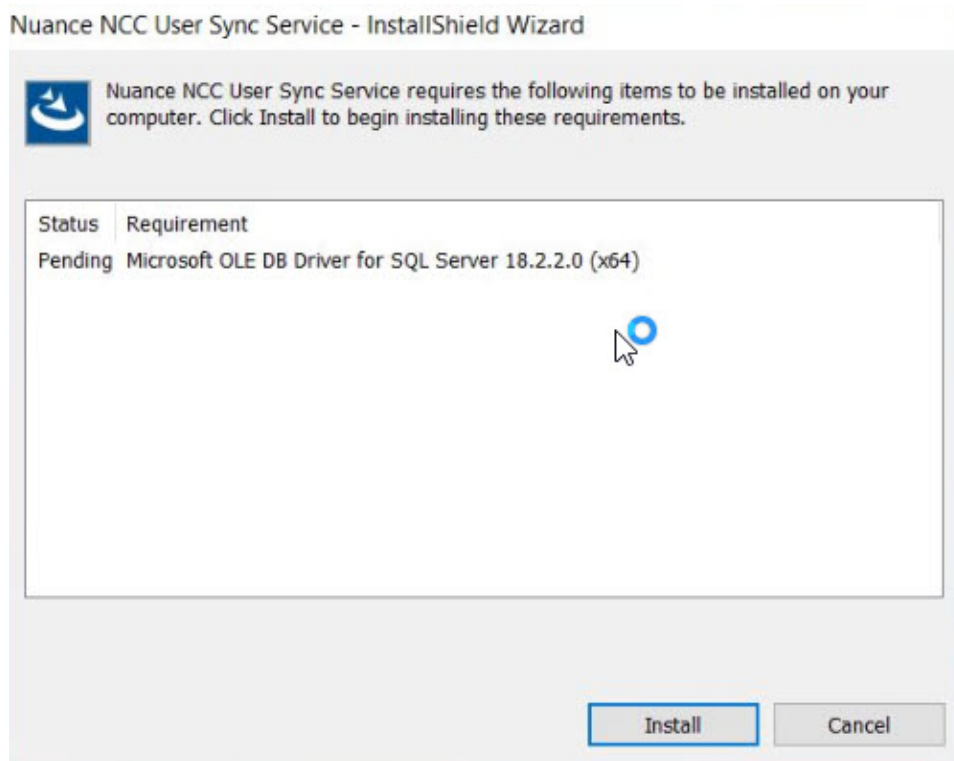
Installing Nuance NCC User Sync Service

If you are an on-premise customer, you also install the **Nuance NCC User Sync Service** to implement user deprovisioning in your environment. You install the **Nuance NCC User Sync Service** as a Windows service.

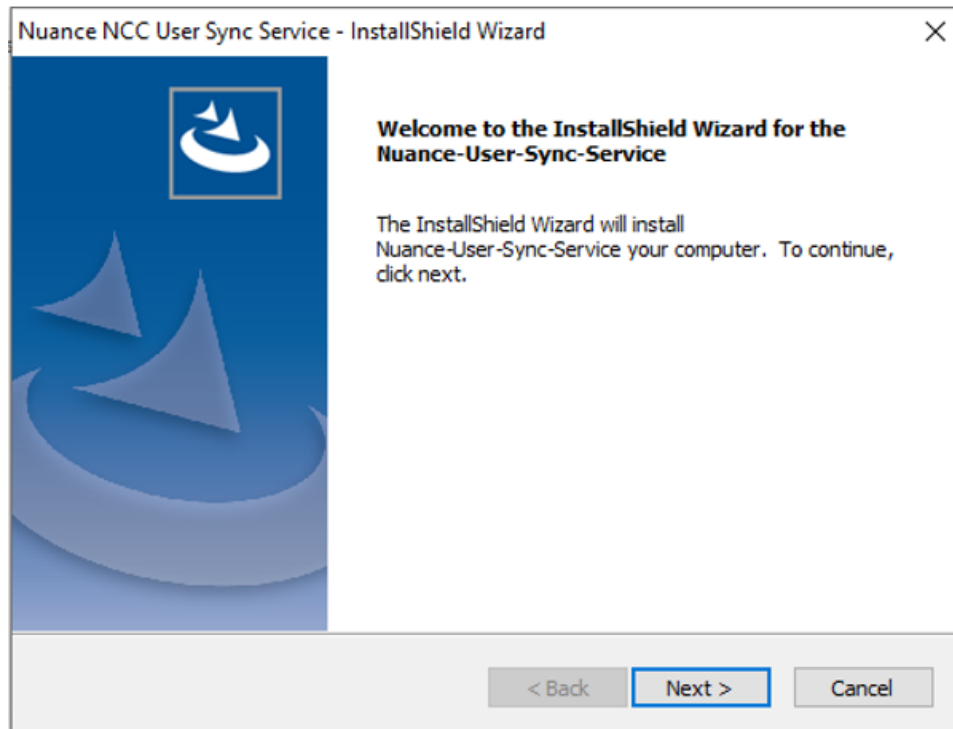
Installing the service

1. Double-click `Nuance-NCC-User-Sync_Service.exe`.

If TLS 1.2 is enabled in your environment and the Microsoft OLE DB Driver for SQL Server is not already installed, a prompt appears. Click **Install** to install it.

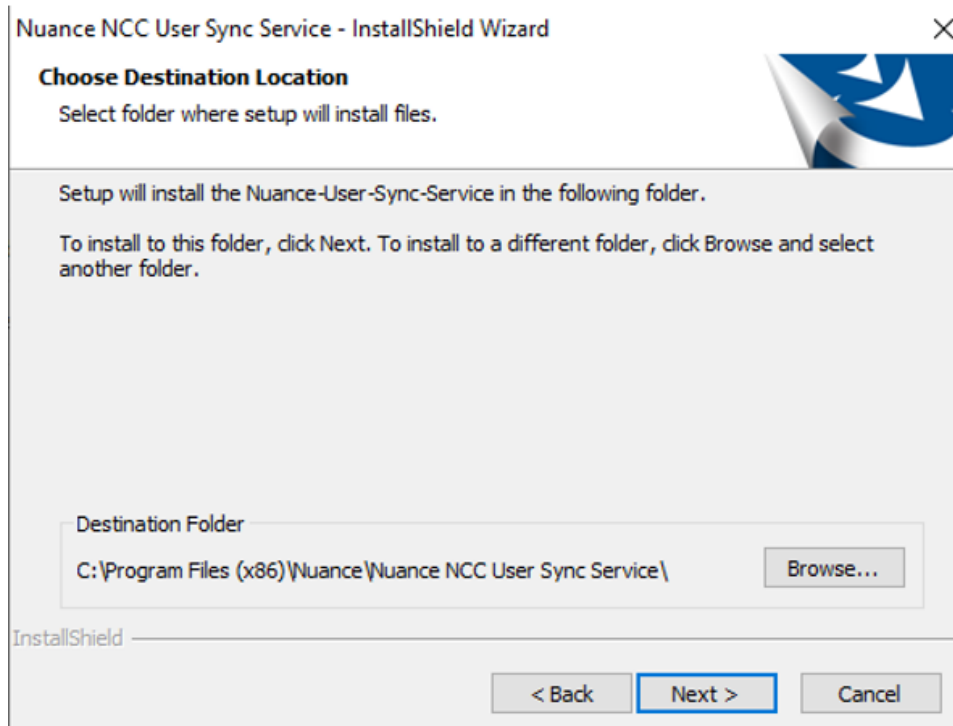


Otherwise, the Welcome screen appears.



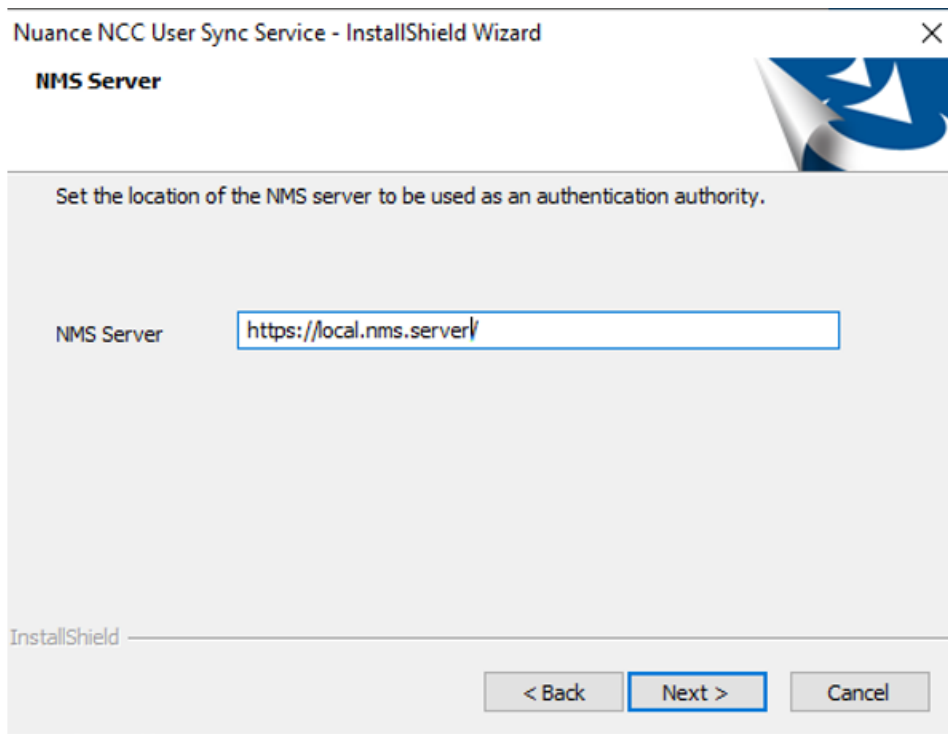
2. Click **Next**.

The Choose Destination Location screen appears.



3. Click **Browse** to specify a custom installation location, or click **Next** to accept the default location.

The NMS Server screen appears.

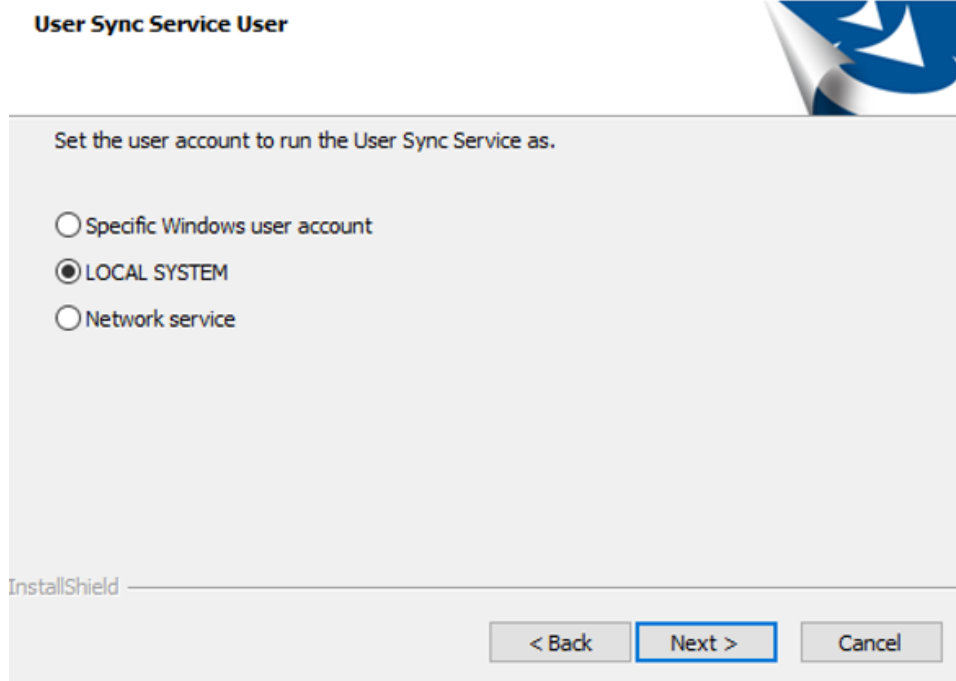


4. Specify the URL of your NMC server.

5. Click **Next**.

The User Sync Service User screen appears.

Nuance NCC User Sync Service - InstallShield Wizard



6. Select the user account to access the server. The default value is **LOCAL SYSTEM**.

Note: If you are an on-premise customer, the user account must meet the following requirements:

- Has a corresponding user created in your organization in Nuance Management Center.
- The Nuance Management Center login matches the domain login of the user account chosen.

7. Click **Next**.

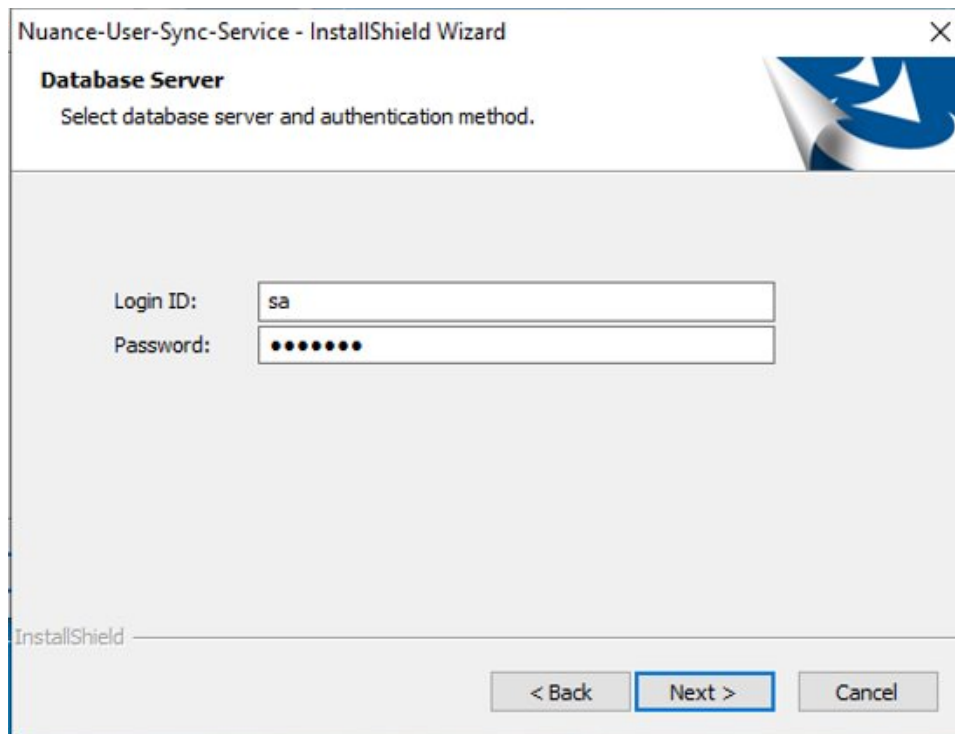
The Database Setup screen appears.

8. Specify the following:

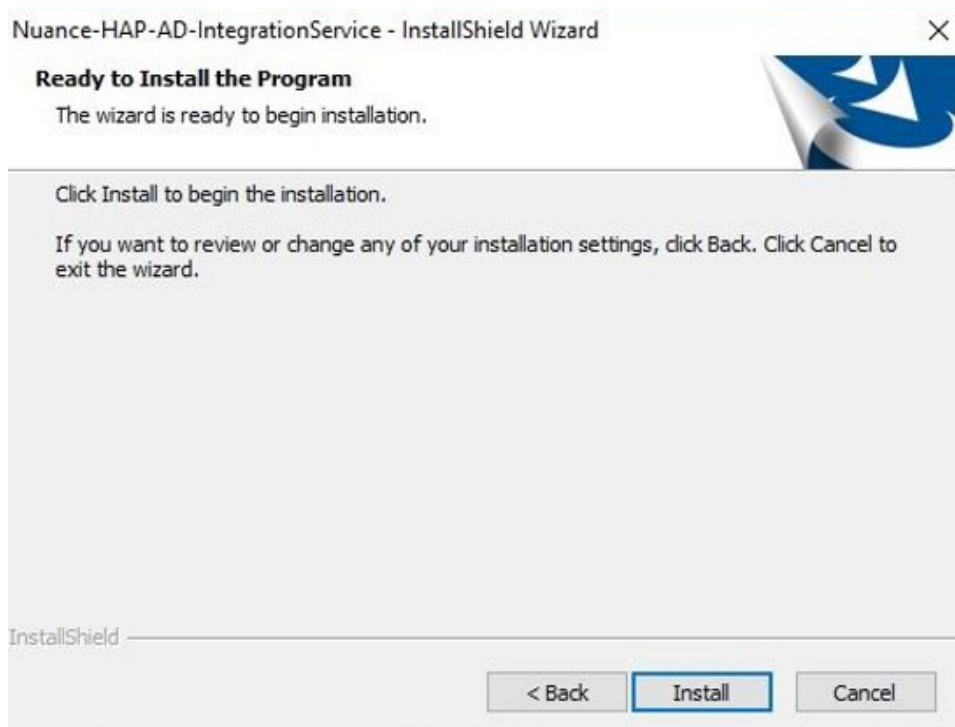
- **Database server**—Database server where you are installing the **Nuance NCC User Sync Service**.
- **Login ID and Password**—SQL Server credentials for the server where you are installing the **Nuance NCC User Sync Service**. These credentials should have permission to create a database and add tables and procedures to it.
- **Name of database catalog**—Default value is **Nuance NCC UserSync**.

9. Click **Next**.

The Database User screen appears.



10. Specify the login ID and password of the appropriate database user.
The **Nuance NCC User Sync Service** logs in to your database under this user.
11. Click **Next**.
The Ready to Install the Program screen appears.



12. Click **Install**.

The installation begins.

13. When the installation completes, click **Finish**.

Adding a non-administrator user to a group

During installation, if a non-administrator/low-privileged user is assigned for the **Nuance NCC User Sync Service** to run as, you must add that user to a group that has access to the user sync API endpoints.

For example:

1. Create a local Windows group or a domain group (for example, **UserSyncApiGroup**).
2. Grant access to the user sync API endpoints and add the user to the group:

```
c:\> netsh http add urlacl url=http://*:80/ user=UserSyncApiGroup
```

```
c:\> netsh http add urlacl url=https://*:443/ user=UserSyncApiGroup
```

Or, contact your internal IT group and request that the user has access to http and https endpoints.

Starting and testing the service





1. Start the **Nuance NCC User Sync Service**.

The installation may have already started the service. You can view the status in the Windows Service Control Manager panel.

2. Specify the following to test the service:

```
https://<ipaddress:port>/api/isalive
```

The following example shows the service when it has registered:

Name	Description	Status	Startup Type
 Nuance NCC AD Integration Service	Nuance service which communicates with a User Directory ...	Running	Automatic (D
 Nuance NCC User Sync Service	This service will synchronize users in your active directory w...	Running	Automatic (D
 Offline Files	The Offline Files service performs maintenance activities on...		Disabled
 Optimize drives	Helps the computer run more efficiently by optimizing files...		Manual

Installing and binding an SSL certificate

You can optionally host the Nuance NCC User Sync Service APIs on SSL/HTTPS. To do so, you'll need an SSL certificate signed by a Certificate Authority (CA). You can then install and bind the certificate using the `netsh.exe` Windows tool.

1. Install a signed SSL certificate in the default store for the user account under which the **Nuance NCC User Sync Service** will run.
2. Locate the certificate thumbprint.

For example **3178772c096f0a4662cas2bda5f6417b029ece1d**.

For help locating the thumbprint, see the following article:

<https://docs.microsoft.com/en-us/dotnet/framework/wcf/feature-details/how-to-view-certificates-with-the-mmc-snap-in>

3. Use the thumbprint to bind the certificate to the port that the Nuance NCC User Sync Service will listen on, such as port 443.

For example:

```
netsh http add sslcert ipport=0.0.0.0:443 certhash=<Cert Thumbprint>appid=
{2534b6a5-bbd8-4a20-8bbb-50a866c977f1}
```

Advanced options

You can override some of the default values set by the installation in the `appsettings.json` file. To specify your own values, locate the appropriate section of the file described below and edit the values in **blue**.

Action	File Section
Change the path to the log file Note: Be sure to escape the backslash.	<pre>"Name": "EventLog", "Args": { "path": "C:\\Nuance\\Logs\\UserSyncMicroLog.OnPrem.json", "formatter": "Serilog.Formatting.Compact.RenderedCompactJsonFormatter, Serilog.Formatting.Compact", "rollingInterval": "Day", "rollOnFileSizeLimit": true, "fileSizeLimitBytes": 1048576, "flushToDiskInterval": "00:00:01" }</pre>
Set the verbosity in the log Log levels are: <ul style="list-style-type: none"> Information Warning Debug Error 	<pre>"MinimumLevel": { "Default": "Information", "Override": { "Microsoft": "Information", "System": "Information" } }</pre>
Define a connection string the application can read and write to/from Note: Region is not required. You can specify any text for this value.	<pre>"connectString": "Server=(localdb)\\MSSQLLOCALDB;Initial Catalog=NCC.UserSync;Persist Security Info=False;Integrated Security=true;MultipleActiveResultSets=False;Encrypt=False;TrustServerCertificate=False;Connection Timeout=30;", "Region": "USCentral", "IsPrimary": true, "IsReporting": false</pre>
(Optional) Define a secondary database (read-only replica of the primary database that the service reads) Note: Region is not required. You can specify any text for this	<pre>"connectString": "Server=(localdb)\\MSSQLLOCALDB;Initial Catalog=HAP.UserSyncRead;Persist Security Info=False;Integrated Security=true;MultipleActiveResultSets=False;Encrypt=False;TrustServerCertificate=False;Connection Timeout=30;", "Region": "USEast", "IsPrimary": false,</pre>

Action	File Section
value.	"IsReporting": true
Set amount of time to wait before declaring pending user sync messages as expired	"UserSync": { "OnPremise": true, "TimeoutPollingIntervalMinutes": 60, "RequestTimeoutAfterXHours": 24, "OpenIdSettings": [
Specify alternative ports for the Nuance NCC User Sync Service to run on Note: If you are installing Nuance NCC User Sync Service on the same server as Nuance Management Center, ensure you add the URL with the specific User Sync port here.	"AllowedHosts": "*", "urls": "http://localhost:8118"

Additional notes

The following section provides additional information for organizations who want to secure their on-premise user deprovisioning installation with SSL.

- The authentication authority is the on-premise Nuance Management Center server.
- The on-premise **Nuance NCC User Sync Service** uses `http.sys` as the HTTP server.
- Use a `net.sh` command to set the SSL certificate for HTTPS.
For more information, see [“Installing and binding an SSL certificate” on page 1](#).
- Default startup ports are **80** and **443**.
- For on-premise customers, the on-premise flag must be set to true (`"OnPremise": true,`).
- Do not modify the keystore container GUID (`"KeystoreContainer": [value],`).
- If you use a custom, plain-text connection string in the `appsettings.json` file, be sure to comment out the `KeystoreContainer.json` element.
- If it becomes necessary to change your User Sync database password, you must re-run the **Nuance NCC User Sync Service** installation.

Enabling user deprovisioning

You enable user deprovisioning in the NMC console. You must have the appropriate grants to view, access, and change settings on this tab.

For more information, see [“System requirements—User deprovisioning” on page 19](#).

To enable deprovisioning:

1. View an organization.
The Manage Organization page appears.
2. View organization details.
The Organization Details page appears.
3. Click the De-provisioning tab.

You must have the **Manage User Deprovisioning** grant to view and access this tab.

Organization Details - Warner_QA | HIM Systems | Organization Details - Nuance | Organizations | Home

Organization Details

General | Address | Products | **Deprovisioning** | Data Retention | Auto-provisioning | Organization Tokens | Central Authentication

Enable user deprovisioning

Notification Email Address

Require confirmation

LDAP Configuration

Server Name

Port Number

SSL Enabled Yes

Base DN

Group Distinguished Name

The following number of users have been identified for deprovisioning: 7. To confirm or cancel, click: [here](#).

Disable users who cannot be found; otherwise these users are deleted

4. Select the **Enable user deprovisioning** option.
5. Provide the email address of the user to receive user deprovisioning notifications in the **Notification Email Address** field.
6. Optionally select the **Require confirmation** option.

Caution: Nuance recommends that you select this option when you initially enable deprovisioning to ensure that it has been configured correctly. Without requiring confirmation, user service may be impacted by incorrectly deleted or disabled user accounts due to misconfiguration.

For information on this setting, see [“User deprovisioning field descriptions” on page 47](#).

7. Configure the LDAP settings for your server in the LDAP Configuration section.
For field information, see [“User deprovisioning field descriptions” on page 47](#).

8. Optionally select the **Disable users who cannot be found** setting.

For more information on this setting, see [“User deprovisioning field descriptions” on page 47](#).

9. Click **Save**.

Confirming users marked for deprovisioning

If the integration service finds users to deprovision and you selected the **Require confirmation** option, the following message appears below the LDAP Configuration section:

"System has identified [x] users for de-provisioning. To confirm or cancel the user deletion, click here."

Do the following to confirm the deprovisioning:

1. View an organization.
The Manage Organization page appears.
2. View organization details.
The Organization Details page appears.
3. Click the Deprovisioning tab.
4. Click the link below the LDAP Configuration section to open the Deprovisioned users dialog box.
5. Review the users and the proposed action, and then do one of the following:
 - Select specific users to deprovision.
Or
 - Click **Select All** to select all users.
6. Then, do one of the following:
 - Click **Confirm Deprovisioning** to deprovision selected users and revoke their product licenses.
Or
 - Click **Cancel Deprovisioning** to cancel the deprovisioning for selected users.

Appendix A: Field descriptions

User provisioning field descriptions	45
User deprovisioning field descriptions	47

User provisioning field descriptions

The following table describes the fields on the **Organization Details>Provisioning** tab for the following products:

- Dragon Ambient eXperience
- Dragon Medical Server
- Dragon Professional

Product	Field	Description
Dragon Ambient eXperience	Enable user provisioning for this product	<ul style="list-style-type: none"> • Enable user provisioning for this product—If selected, when LDAP authentication is in use and users in a specific LDAP group log in to Dragon Ambient eXperience, Nuance Management Center creates users automatically when they do not already exist, grants them a product license, and assigns them to the Nuance Management Center group that you specify. If no licenses are available, Nuance Management Center still creates the user accounts.
	Add users to group	<p>Group to which Nuance Management Center assigns provisioned users.</p> <p>You must have selected the Enable user provisioning for this product option above.</p>
Dragon Medical Server	None Enable auto-provisioning for this product Enable user provisioning for this product	<p>Select one of the following:</p> <ul style="list-style-type: none"> • None—Nuance Management Center does not provision users automatically. You must create them manually or import them on the User Accounts ribbon. • Enable auto-provisioning for this product—If selected, when token authentication is in use and users log in to a client product, Nuance Management Center creates users automatically when they do not already exist and assigns them a product license if one is available. If no licenses are available, Nuance Management Center still creates the user account. • Enable user provisioning for this product—If selected, when LDAP authentication is in use and users in a specific LDAP group log in to Dragon Medical One on-premise, Nuance Management Center creates users automatically when they do not already exist, grants them a product license, and assigns them to the Nuance Management Center group that you specify. If no licenses are available, Nuance Management Center still creates the user accounts.

Product	Field	Description
	Add users to group	Group to which Nuance Management Center assigns provisioned users. You must have selected the Enable user provisioning for this product option above.
Dragon Professional	Enable user provisioning for this product	<ul style="list-style-type: none"> • Enable user provisioning for this product—If selected, when LDAP authentication is in use and users in a specific LDAP group log in to Dragon Professional, Nuance Management Center creates users automatically when they do not already exist, grants them a product license, and assigns them to the Nuance Management Center group that you specify. If no licenses are available, Nuance Management Center still creates the user accounts.
<p>LDAP Configuration</p> <p>The following fields appear only when the Enable user provisioning for this product option above is selected.</p>		
	Server Name	Your Active Directory server address.
	Port Number	LDAP server port number to which the user provisioning service can connect.
	SSL Enabled	If Yes , SSL is enabled. If No , SSL is not enabled.
	Base DN	Root for searches in your LDAP tree, or point from which to start searching for users. Typically, this matches the root of your domain. Example: DC=acme,DC=com
	Bind User Name	User account that authenticates to your LDAP server. This field is available only if your environment is on-premise.
	Bind Password	Password for the Bind User Name. This field is available only if your environment is on-premise.
	Group Distinguished Name	The distinguished name of the LDAP group the user provisioning service would look in to find users to provision. Example: CN=R-RadiologyGroup,CN=Users,DC=acmeco,DC=com

User deprovisioning field descriptions

The following table describes the fields on the **Organization Details>Deprovisioning** tab in the NMC console. You must have the Manage User Deprovisioning grant to view and modify this tab.

Field	Description
Enable user deprovisioning	If selected, enables deprovisioning. If deselected, disables deprovisioning.
Notification Email Address	Email address of the user to receive deprovisioning notifications. The user receives the notifications when the following occur: <ul style="list-style-type: none"> • Success notification indicating the number of users flagged for deprovisioning. • Error message with the request transaction ID for troubleshooting.
Require confirmation	If selected, Nuance Management Center provides a list of users marked for Delete and Disable when the user comparison occurs, allowing you to first review and confirm, change, or cancel the action before users are deprovisioned. If deselected, Nuance Management Center deprovisions users automatically without requiring you to review and confirm the action. <div style="border: 1px solid #ccc; background-color: #f9f9f9; padding: 10px; margin: 10px 0;"> <p>Caution: Nuance recommends that you select this option when you initially enable deprovisioning to ensure that it has been configured correctly. Without requiring confirmation, user service may be impacted by incorrectly deleted or disabled user accounts due to misconfiguration.</p> </div>
LDAP Configuration	
Server Name	Your Active Directory server address.
Port Number	LDAP server port number to which the user comparison app can connect.
SSL Enabled	If Yes, indicates the connection to your LDAP server is secured by SSL. If No, indicates the connection to your LDAP server is not secured by SSL.
Base DN	Root for searches in your LDAP tree, or point from which to start searching for users. Typically, this matches the root of your domain. Example: DC=acme,DC=com
Group Distinguished Name	The distinguished name of the LDAP group the integration service would look in to find users for the comparison process. Example: CN=RadiologyGroup,CN=Users,DC=acme,DC=com
Disable users who cannot be found	If selected, users are disabled when the users exist in Nuance Management Center but do not exist in your user directory. If deselected, users are deleted when the users exist in Nuance Management Center but do not exist in your user directory.

Field	Description
	Nuance Management Center revokes the product licenses from both disabled and deleted users. Default value: Deselected

Appendix B: Troubleshooting

Troubleshooting your on-premise deployment	50
--	----

Troubleshooting your on-premise deployment

Error	Solution
<p>The prefix 'http://*:80/' is already registered.</p> <p>Or</p> <p>The prefix 'https://*:443/' is already registered.</p>	<p>When you install Nuance-NCC-User-Sync-Service.exe on a machine that is also running IIS, you may see these errors when the Nuance NCC User Sync Service starts. To resolve these errors, configure the Nuance NCC User Sync Service to use different ports.</p> <p>Edit the appsettings.json file and add the following line:</p> <pre>"urls" : "https://localhost: 9999;http://localhost:8888"</pre> <p>Change the values in blue to the appropriate ports for HTTP and HTTPS.</p> <p>For more information on the appsettings.json file, see “Advanced options” on page 39.</p> <div style="border: 1px solid gray; padding: 5px; background-color: #f0f0f0;"> <p>Note: This is a top-level element.</p> </div>
<p>Error: The target principal name is incorrect.</p>	<p>You might see this error when the Nuance NCC AD Integration Service starts and is unable to negotiate credentials with the NMC server for the user it is running under. You specified this user in step 7 of the Nuance-NCC-AD-IntegrationService.exe installation.</p> <p>To resolve this error, you must assign a Service Principal Name (SPN) to the user. An SPN is required for Kerberos authentication.</p> <p>For example:</p> <pre>setspn -s HTTP/nmsserver.domain.local domain\serviceuser</pre>